

For Lease

Tampa Palms Office

5209 Tampa Palms Blvd. | Tampa, FL 33647



Snapshot

Property Type: Professional Office

Term: Negotiable

Property Highlights

- 10,132 sf Single-Story Office Building
- Wrap-Around porch overlooking pond with fountain
- Parking Ratio of 3.4 / 1,000 sf
- Originally constructed as the Information Center & Development Office for the Tampa Palms development

Location

Highly Desirable Tampa Palms location with frontage on Bruce D. Downs Blvd.

Recent Improvements

- Complete painting of the interior and exterior.
- New roof
- New ADA access ramp.
- Complete overlay of the paved surface.
- All the tree canopies have been raised.
- Thorough cleanup of the grounds

To learn more, please contact:

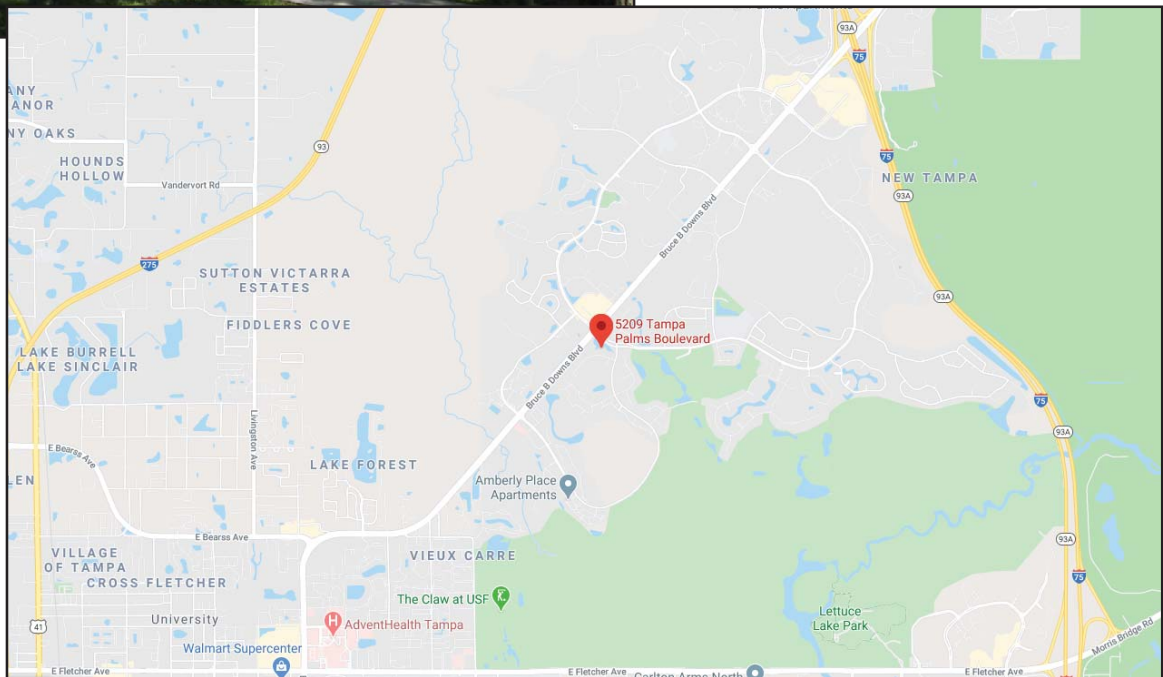
Renee Opland
Arcis Realty, LLC
Renee@Arcisinc.com
727.202.9595



For Lease



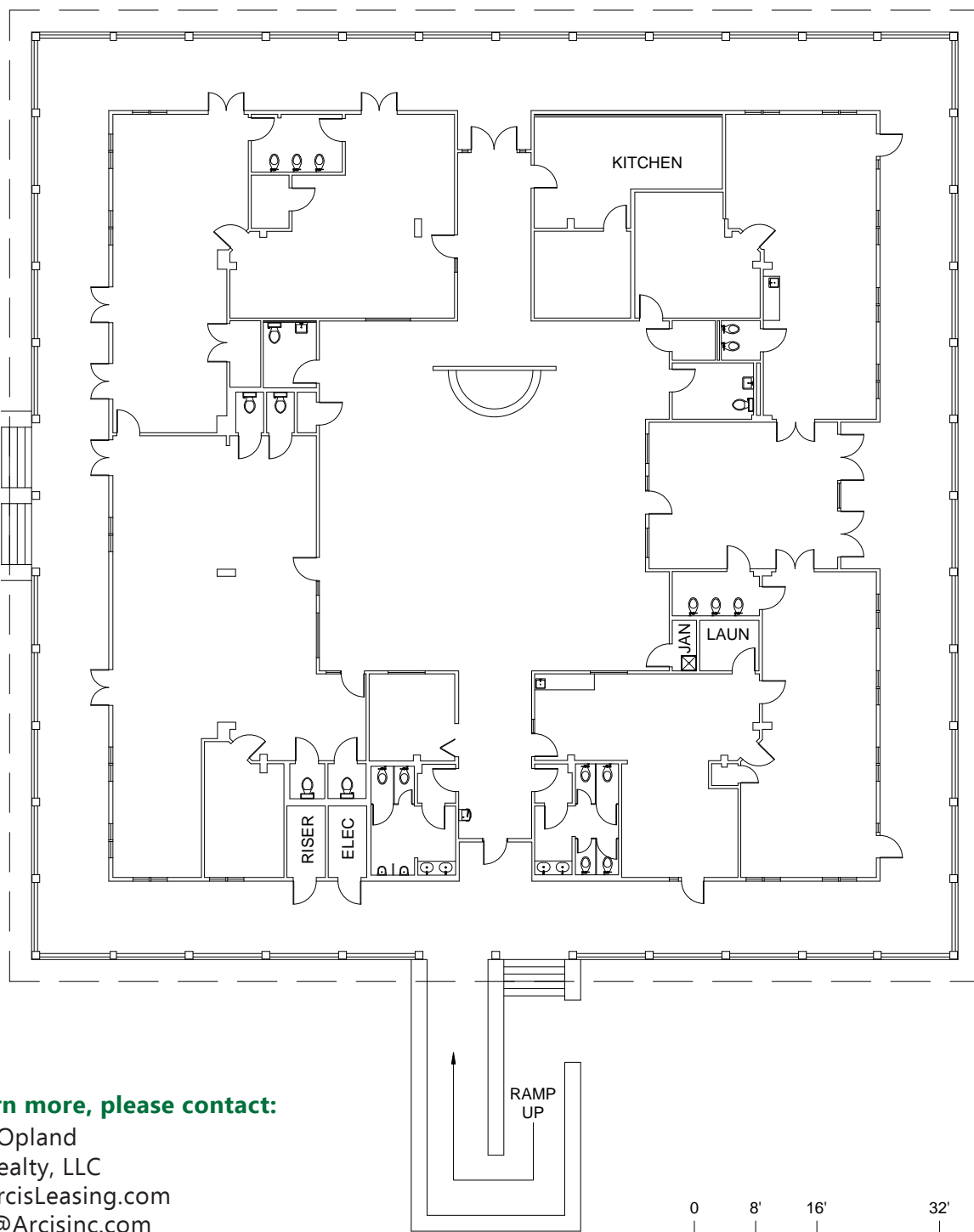
Tampa Palms is a mixed-use, master planned community with homes, shops, offices, apartment homes, churches, recreational facilities, schools, restaurants, a country club, and an 18-hole golf course. Located on 4,100 acres, Tampa Palms includes 28 separate villages, ranging from estates to townhomes, from single family custom homes to apartment homes.



To learn more, please contact:

Renee Opland
Arcis Realty, LLC
www.ArcisLeasing.com
Renee@Arcisinc.com
727.202.9595

For Lease



To learn more, please contact:

Renee Opland
Arcis Realty, LLC
www.ArcisLeasing.com
Renee@Arcisinc.com
727.202.9595