

# For Lease

## Laurel Place

5102 W. Laurel Street | Tampa, FL 33607



### Snapshot

---

Property Type: Professional Office

Term: Negotiable

Suites Available: Suite 500 - 3,380 sf

Possession: Fall 2014

Rate: \$26.00 psf, full service gross

[www.ArcisLeasing.com](http://www.ArcisLeasing.com)

#### To learn more, please contact:

Bruce Burdge  
Arcis Realty, LLC  
Bruce@Arcisinc.com  
813.805.2110

### Property Highlights

---

- 41,552 sf Single-Story Office Building
- After-Hours Security Card Access
- Monument Signage Available
- 5:1,000 Surface Parking
- Verizon SmartPark & FiOS Service

### Location

---

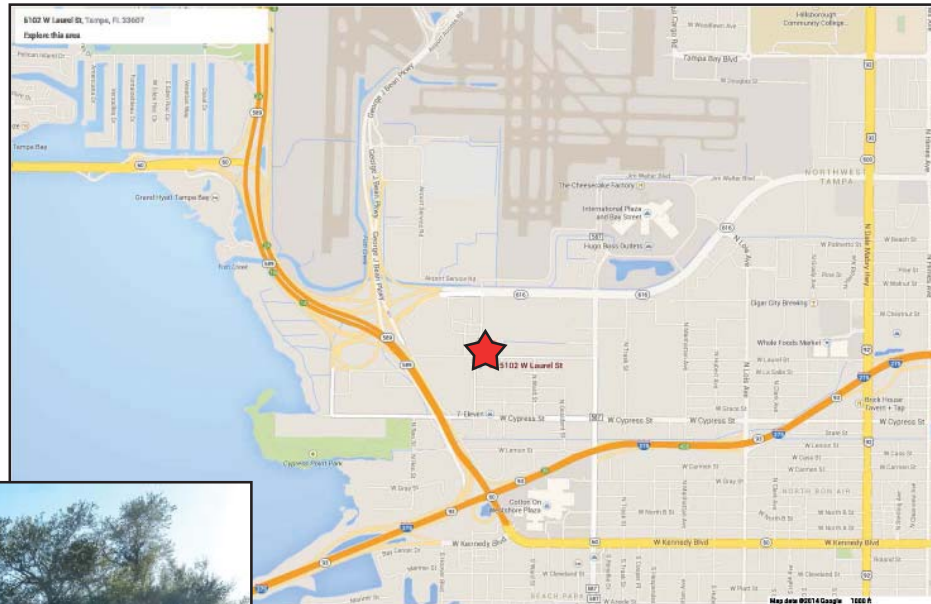
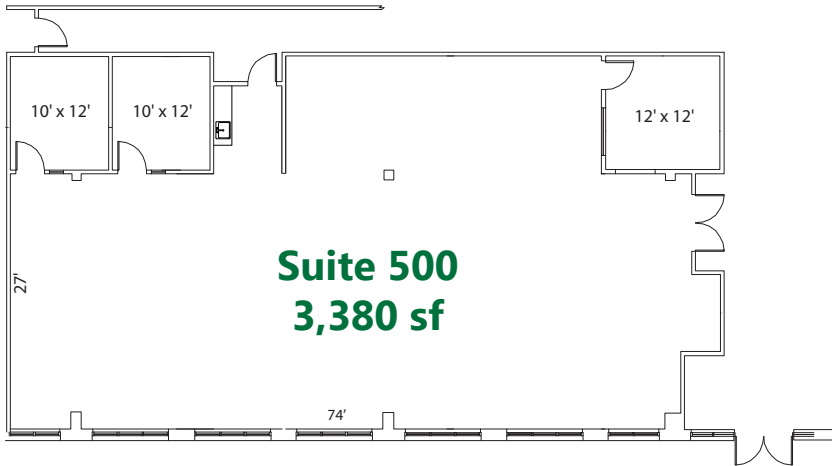
Highly Desirable Westshore Business District Location at the corner of Laurel Street & O'Brien Street. Easy ingress/egress & conveniently located near Tampa International Airport.



# For Lease

## Laurel Place

5102 W. Laurel Street | Tampa, FL 33607



### To learn more, please contact:

Bruce Burdge  
Arcis Realty, LLC  
Bruce@Arcisinc.com  
813.805.2110