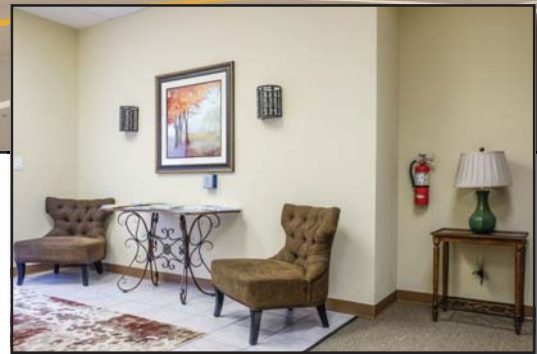


For Lease

Belcher Commons

50 South Belcher Rd., Clearwater, FL 33765

**Leasing
Incentives!**



Snapshot

Property Type: Office

Electric: Submeter

Term: Flexible Lease Terms

Suites Available: 502 sf - 9,068 sf

Possession: Immediate possession on most suites

www.BelcherCommons.com

To learn more, please contact:

Kelley Matheson
727.202.9595
Kelley@ArcisInc.com

Property Highlights

- 112,241 SF Garden-style office park
- Property Management & Maintenance on-site
- Upgraded common areas, restrooms and suites
- U.S. Post Office adjacent to building
- Signage available
- On-site FedEx drop box
- Bighthouse Fiber Optics, Verizon DSL & Windstream
- Convenient Location with a wide variety of services nearby including banking, restaurants, medical services, and a new Neighborhood Walmart

FRESH NEW LOOK!

Owned & Managed by:



Independently owned & operated. The information contained herein was obtained from sources believed to be reliable; however, Owner makes no guarantees, warranties, or representations as to the completeness or accuracy thereof. The presentation of this property is submitted subject to errors, omissions, change of price, availability or conditions prior to sale or lease, or withdrawal without notice.

For Lease

Belcher Commons Office Park
50 S. Belcher Rd. | Clearwater, FL 33765



To learn more, please contact:
Kelley Matheson
727.202.9595
Kelley@ArcisInc.com

